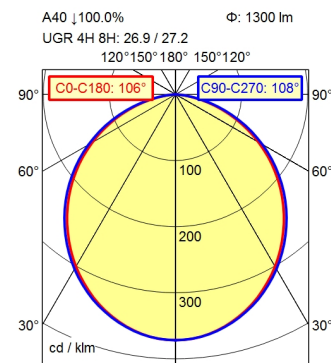
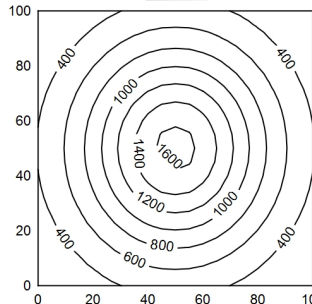


CEE 7/VII



A40 | 100.0% Φ : 1300 lm
UGR 4H 8H: 26.9 / 27.2

100 x 100 cm Φ : 1300 lm
Em: 758 lx
Emax: 1612 lx
Emin: 253 lx



Height (m)	Beam Diameter (m)	Light Intensity (lx)
0.25	0.86 m 0.69 m	7733 lx
0.50	1.33 m 1.39 m	1933 lx
0.75	1.99 m 2.08 m	859 lx
1.00	2.65 m 2.77 m	483 lx

- light source
- work equipment
- connected load
- secondary tension
- power consumption
- sec. power consumption
- luminous flux
- luminous efficiency
- light type/-color
- colour temperatur
- color rendering index
- light distribution
- direct ratio
- beam angle
- chromaticity tolerance LED
- luminance (L65)
- unified glare rating (4H 8H)
- system of protection
- class of protection
- technology
- operation
- housing
- cover
- arm
- balance of articulation joints
- weight (net)
- mains lead
- fastening
- decorative contrast side parts
- special features

- LED
- electronic transformer
- 100 - 240 V; Wechselstrom (AC); 50 Hz; 60 Hz
- 24 V
- ca. 27 W
- ca. 24 W
- approx. 1.300 lm
- approx. 54 lm/W
- D50 standard light; cold white
- approx. 5.000 K
- CRI > 95; R9 > 85
- direct
- approx. 100 %
- 110°
- < 3 SDCM
- <= 23000 cd/m²
- <= 28
- IP 20
- I with plug-in power supply; III without plug-in power supply
- Touch DIM
- multi-function switch
- aluminium coloured anodised
- milky; plastic
- silver metallic
- spring
- ca. 1,9 kg
- ca. 3,4 m; mains plug; CEE 7/VII
- table base
- black
- short arm

