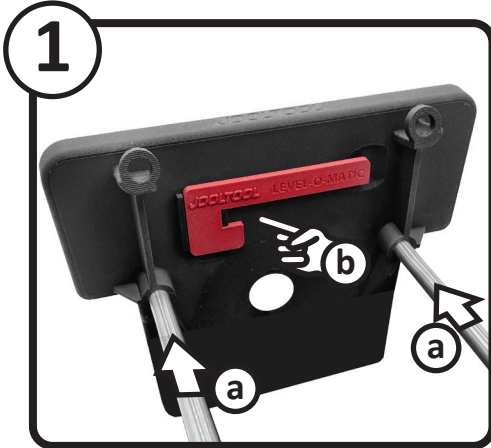


# DELUXE PLATFORM SETUP

## INSTALL THE PLATFORM



- a) Install the RODS into the bottom of the PLATFORM as shown.
- b) Locate the **Leveling tab** for later use (see below)

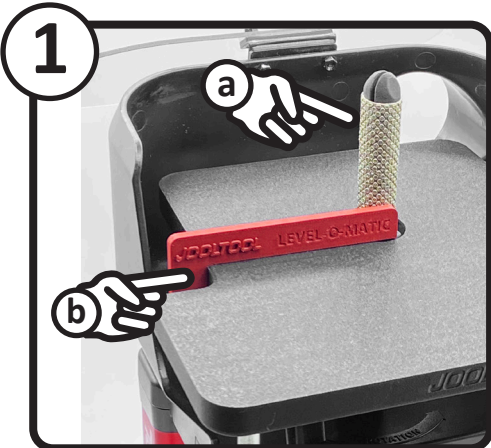


- a) Slide the PLATFORM assembly into the JOOLTOOL's post holes
- b) Install the KNOBS loosely. Do NOT tighten them yet.

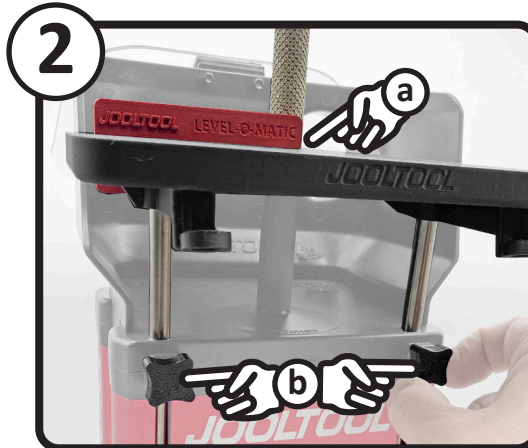


- a) Adjust the height by gently sliding the PLATFORM up or down as needed.
- b) Tighten the KNOBS to secure platform in place.

## LEVEL THE PLATFORM FOR USE WITH THE SANDING MANDREL (MAY BE SOLD SEPARATELY)



- Ensure PLATFORM moves freely
- a) Install the SANDING MANDREL
- b) Snap the **Leveling tab** into the left notch on the PLATFORM.

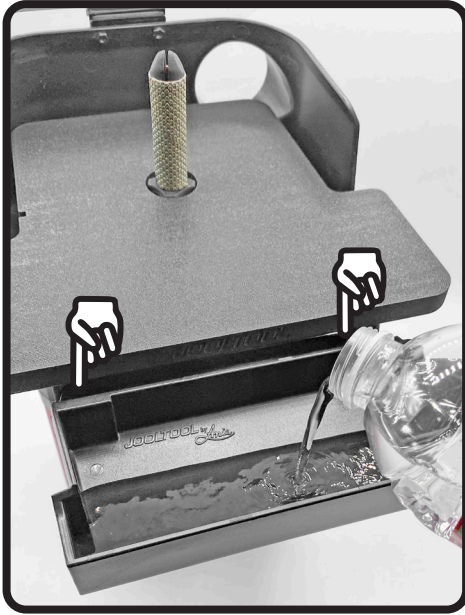


- a) Ensure the **Leveling tab** sits flat on the base of the Mandrel. (The top of the protruding part)
- b) Tighten the KNOBS to secure



Remove the **Leveling tab** and enjoy your ROUTER PLATFORM!

## WATER TRAY



Use with the WATER TRAY for convenient access to lubrication. It attaches to the two eyelets located under the PLATFORM.

## CHANNEL CUTS FOR WIRE WRAPPING



Set the platform at a low setting and install the SAVE-YOUR-HANDS tool with the DIAMOND CUTTING DISCS.



Adjust the PLATFORM height as needed for Consistent Channel Cuts in Stones for Wire-Wrapping.

## HAND-REST SETTING



Use at Lowest Position Setting when working on See-Thru Discs for Extra Support and Control

## VACUUM TIP DOCK



The rear of the PLATFORM has a convenient docking notch for the TIP of your JOOLTOOL PRO-VACUUM HOSE. Use it at the Highest Positions above your JOOLTOOL's HOOD.