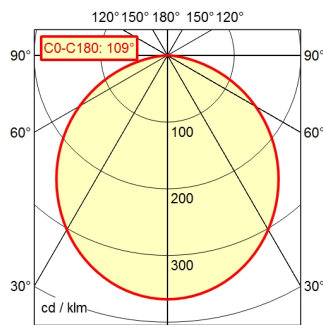


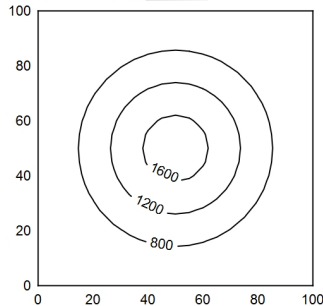
CEE 7/VII

A40 ↓ 100.0% Φ: 1350 lm



100 x 100 cm 0° Φ: 1350 lm

Em: 787 lx
Emax: 1721 lx
Emin: 260 lx



light source
work equipment
connected load
power consumption
luminous flux
luminous efficiency
light type/-color
colour temperatur
color rendering index
light distribution
direct ratio
beam angle
chromaticity tolerance LED
glare control
luminance (L65)
unified glare rating (4H 8H)
system of protection
class of protection
technology
operation
housing
cover
arm
weight (net)
mains lead
fastening
maximum ambient temperature

LED
electronic ballast in housing
100 - 240 V; Wechselstrom (AC); 50 Hz; 60 Hz
ca. 18 W
approx. 1.350 lm
approx. 75 lm/W
cold white
approx. 5.000 K
CRI > 80
direct
approx. 100 %
110°
< 4 SDCM
see luminaire type
<= 22000 cd/m²
<= 28
IP 20 [IP65]
I
switchable
push button
painted; Jet black
Polycarbonate (PC); white opal
black
ca. 2,2 kg
ca. 3 m; mains plug; CEE 7/VII
table clamp (accessory); wall bracket (accessory);
screw-down flange
30 °C